

ENGAGEMENT

JEWELRY

DESIGNER LINKS

DIAMONDS

WATCHES

ECATALOGS

SPECIALS

MARKETING

EDUCATION

Ring Size Guide

Print

A ring should fit comfortably in the finger of the wearer as well as it should be tight enough which will prevent it from accidentally falling off. The best and most accurate way to measure a ring size is by visiting a local jeweler. Jewelers use a set of graduated rings and other specialized tools to determine ring size. Ring size can also be measured easily at home by any of the following ways:

Ring Size Measurement by Ring's Diameter

The diameter of a ring can be measured by the distance across the middle inside. You can use below given ring size circles based on ring's diameter for measuring your exact ring size. Please follow the steps to get the accurate ring size:

Select a ring that fits comfortably in the figure for which you are intended to know the size.

Take a printout of the below given figure A as per the given print instructions.

Place that ring over the circles to match with nearest circle size to find the inside size of the ring.

If the ring falls in between two sizes then it is advisable to go for the larger size.



Ring Size Measurement by Ring's Circumference

The circumference of a ring can be measured by its length around the inner circle. You can use below given finger size strip for measuring your exact ring size. Please follow the steps to get the accurate ring size:

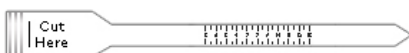
Take a printout of the below given figure B as per the given print instructions.

Carefully cut this printout from the image outline to get a size strip. Also give a slit inside the strip at the left end.

Wrap this size strip around the intended finger with the scale facing out and then slide the narrow end of the strip through the slit.

Pull the narrow end until the fit is snug. Also try to move that fit through the largest part of the finger, this may be the knuckle.

The number that lines up at the slit represents the ring size for that finger.



Print Instructions

To get the accurate ring size results, please follow these print instructions:

You must make sure that you do not have 'Shrink oversized pages to fit paper size' or 'Expand small pages to paper size' selected in the Print Dialog Box.

You must also make sure that you have taken printouts without changing image size either intentionally or unintentionally.

You can verify the sizes of the image printouts by measuring them with a ruler.

Tips for Measuring Accurate Ring Size

You should avoid measuring cold fingers as this is when fingers are at their smallest size.

You should measure your finger in warm temperatures at the end of the day.

If your ring size falls in between two ring sizes then it is advisable to go for the larger size.

Tips, if you're buying the Ring as a Surprise

You should ask your intended recipient's mother or one of the friends if they know his / her finger size.

You can also borrow your intended recipient's best fitted ring and find out the ring size by using above mentioned diameter method.

Other Tips and Information

Engagement and wedding rings are traditionally worn on the ring finger on the left hand. The ring finger is located between the little finger and the middle finger.

Ring sizes are expressed differently in different countries. All sizes listed in the above images and in tips are standard American Sizes.

The average adult woman's ring size is ranged in between 5 to 7 whereas the average adult man's ring size is ranged in between 9 to 11.

Conversion Chart for Ring Sizes

The following chart will be useful in conversion of measured ring size in inches or in millimeters to numbered size applicable in USA and Canada. This chart also shows ring sizes applicable in UK, Ireland, Australia, Japan and Switzerland.

Ring Sizes				Measured Sized			
USA & Canada	UK, Ireland & Australia	Japan	Switzerland	Inside Diameter		Inside Circumference	
				Inches	Millimeters	Inches	Millimeters
0				0.458	11.63	1.44	36.5
1/4				0.466	11.84	1.46	37.2
1/2	A			0.474	12.04	1.49	37.8
3/4	A 1/2			0.482	12.24	1.51	38.5
1	B	1		0.49	12.45	1.54	39.1
1 1/4	B 1/2			0.498	12.65	1.56	39.7
1 1/2	C			0.506	12.85	1.59	40.4
1 3/4	C 1/2			0.514	13.06	1.61	41.0
2	D	2	1.5	0.522	13.26	1.64	41.7
2 1/4	D 1/2			0.53	13.46	1.67	42.3
2 1/2	E	3	2.75	0.538	13.67	1.69	42.9
2 3/4	E 1/2			0.546	13.87	1.72	43.6
3	F	4	4	0.554	14.07	1.74	44.2
3 1/4	F 1/2	5	5.25	0.562	14.27	1.77	44.8
3 1/2	G			0.57	14.48	1.79	45.5
3 3/4	G 1/2	6	6.5	0.578	14.68	1.82	46.1
4	H	7		0.586	14.88	1.84	46.8
4 1/4	H 1/2		7.75	0.594	15.09	1.87	47.4
4 1/2	I	8		0.602	15.29	1.89	48.0
4 3/4	J		9	0.61	15.49	1.92	48.7
5	J 1/2	9		0.618	15.70	1.94	49.3
5 1/4	K		10	0.626	15.90	1.97	50.0
5 1/2	K 1/2	10		0.634	16.10	1.99	50.6
5 3/4	L		11.75	0.642	16.31	2.02	51.2
6	L 1/2	11	12.75	0.65	16.51	2.04	51.9
6 1/4	M	12		0.658	16.71	2.07	52.5
6 1/2	M 1/2	13	14	0.666	16.92	2.09	53.1
6 3/4	N			0.674	17.12	2.12	53.8
7	N 1/2	14	15.25	0.682	17.32	2.14	54.4
7 1/4	O			0.69	17.53	2.17	55.1
7 1/2	O 1/2	15	16.5	0.698	17.73	2.19	55.7
7 3/4	P			0.706	17.93	2.22	56.3
8	P 1/2	16	17.75	0.714	18.14	2.24	57.0
8 1/4	Q			0.722	18.34	2.27	57.6
8 1/2	Q 1/2	17		0.73	18.54	2.29	58.3
8 3/4	R		19	0.738	18.75	2.32	58.9
9	R 1/2	18		0.746	18.95	2.34	59.5
9 1/4	S		20.25	0.754	19.15	2.37	60.2
9 1/2	S 1/2	19		0.762	19.35	2.39	60.8
9 3/4	T		21.5	0.77	19.56	2.42	61.4
10	T 1/2	20		0.778	19.76	2.44	62.1
10 1/4	U	21		0.786	19.96	2.47	62.7
10 1/2	U 1/2	22	22.75	0.794	20.17	2.49	63.4
10 3/4	V			0.802	20.37	2.52	64.0
11	V 1/2	23		0.81	20.57	2.54	64.6
11 1/4	W		25	0.818	20.78	2.57	65.3
11 1/2	W 1/2	24		0.826	20.98	2.59	65.9
11 3/4	X			0.834	21.18	2.62	66.6
12	X 1/2	25	27.5	0.842	21.39	2.65	67.2
12 1/4	Y			0.85	21.59	2.67	67.8
12 1/2	Z	26	28.75	0.858	21.79	2.70	68.5
12 3/4	Z 1/2			0.866	22.00	2.72	69.1

13		27		0.874	22.20	2.75	69.7
13 1/4	Z1			0.882	22.40	2.77	70.4
13 1/2				0.89	22.61	2.80	71.0
13 3/4	Z2			0.898	22.81	2.82	71.7
14	Z3			0.906	23.01	2.85	72.3
14 1/4				0.914	23.22	2.87	72.9
14 1/2	Z4			0.922	23.42	2.90	73.6
14 3/4				0.93	23.62	2.92	74.2
15				0.938	23.83	2.95	74.8
15 1/4				0.946	24.03	2.97	75.5
15 1/2				0.954	24.23	3.00	76.1
15 3/4				0.962	24.43	3.02	76.8
16				0.97	24.64	3.05	77.4

Facts about International Ring Sizing

In the United States and Canada, ring sizes are specified using a numerical scale, with quarter and half sizes.

In the United Kingdom, Ireland and Australia, ring sizes are specified using an alphabetical scale, with half sizes.

In Japan, ring sizes are specified using a numerical scale, that only has whole sizes.

In Switzerland, ring sizes are specified using a numerical scale, with quarter and half sizes.

In Europe (excluding Ireland and the UK), ring sizes are specified using a numerical scale, with half sizes.

Print

Home

[ABOUT US](#) | [TESTIMONIALS](#) | [FAQS](#) | [TERMS OF USE](#) | [PRIVACY POLICY](#) | [RING SIZE GUIDE](#) | [SERVICES](#)

Store Location: 129 W. Front St • Berwick, PA 18603 • Tel: (570) 752-5731 • Email: info@walkersjewelers.com

Store Hours: Monday, Thursday and Friday 9am-8pm • Tuesday and Wednesday 9am-5pm • Saturday 9am-4pm, Closed Sunday
© 2013 Walker's Jewelers, All rights reserved.

